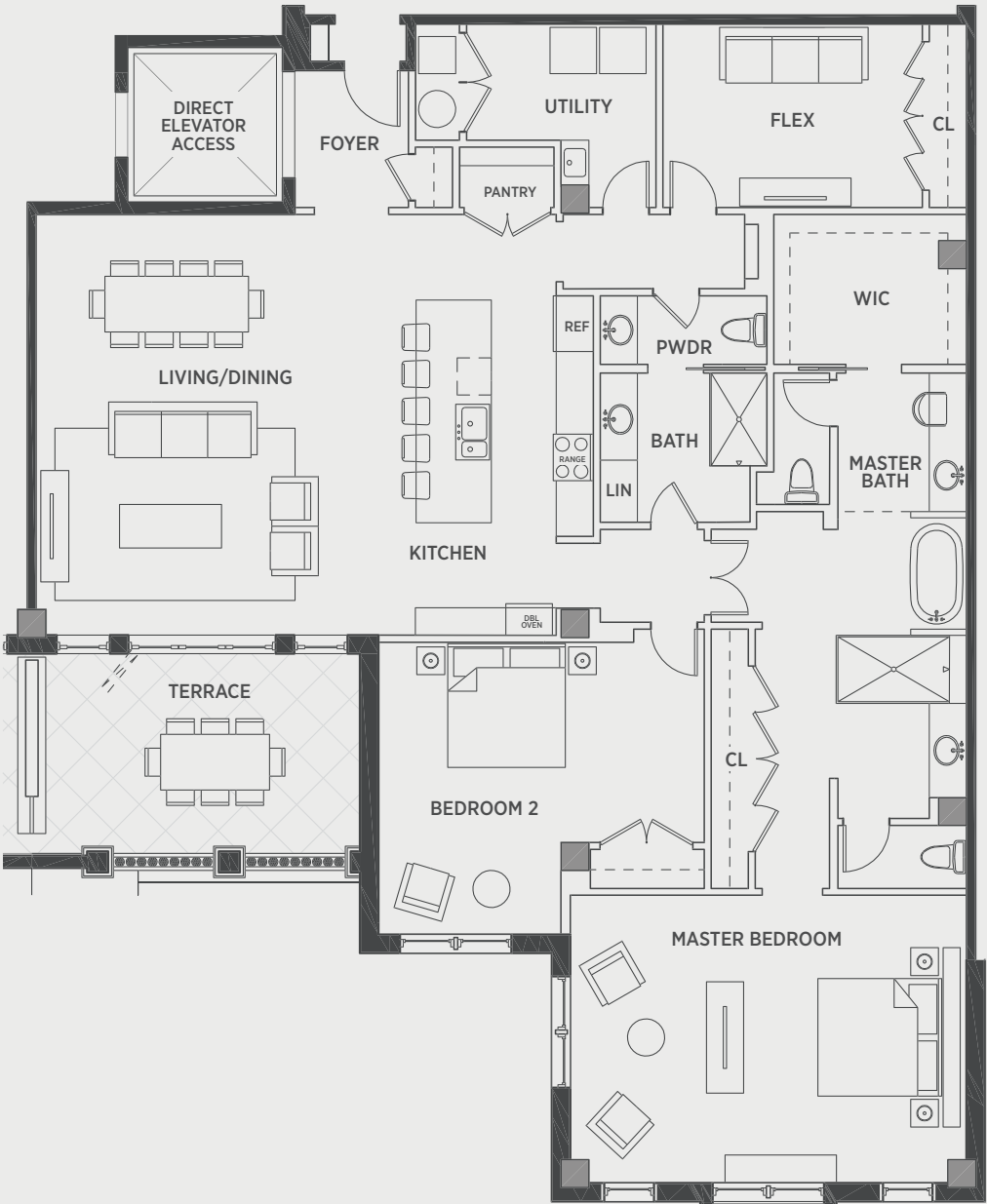


THE GARDEN DISTRICT
PARKVIEW
AT
SOUTHLAKE TOWN SQUARE



Parkview Residences - Unit Type A

2 Bedroom + Flex, 2 1/2 Bath

2,384 SF Interior | 193 SF Terrace | 70 SF A/C Storage

PARKVIEW RESIDENCES FEATURES & AMENITIES

The Parkview condominium residences offer luxury living on a single level, overlooking a new oval park and within easy walking distance of shopping, dining, and services. They set a new standard in Southlake in terms of aesthetic, quality, features and finishes:

- Parkview's concrete and steel construction is built for life - now, 10 years from now, and 100 years from now
- A Rooftop Terrace with fire pits, barbecue grills, plunge pools and comfortable loungers
- A yoga/barre salon with gym and cardio equipment
- Shared amenities include Entertainment Kitchen, Media Room, Living Room and Boardroom
- Impressive facades with classic terraces and expansive windows
- Wide plank hardwood flooring in the entry halls, kitchen and living room
- Expansive 9'6" ceilings in each residence
- Energy efficient Low-E glass windows
- Custom-designed cabinetry throughout
- Gourmet appliances in each home
- Full height kitchen cabinets with soft-close pullout drawers
- Stone slab kitchen islands and counters
- Luxurious master bath with free-standing tub, frameless glass shower, and furniture-style vanities
- Smart home integration for sound, heating, lighting and security
- Gated garages with deeded parking stalls
- Dedicated climate controlled storage spaces
- A host of available upgrade options to personalize your home

THE GARDEN DISTRICT
PARKVIEW
AT
SOUTHLAKE TOWN SQUARE

817.502.9227 | ownsouthlake.com

Floorplans shown are not to scale and are subject to change and all dimensions are approximate and subject to change. The materials, designs, features and amenities depicted are subject to change and no assurance is made that the project or the homes will be of the same size or nature as depicted or described. Review the condo declaration for a description of how the units are measured.